

U.S. Census Bureau
American FactFinder



THOMAS MAP 10: TM-P016. Males per 100 Females for Persons 18 Years and Over: 2000
 Universe: **Population 18 years and over**
 Data Set: **Census 2000 Summary File 1 (SF 1) 100-Percent Data**
Escambia County, Florida by County Subdivision

NOTE: For information on confidentiality protection, nonsampling error, definitions, and count corrections see <http://factfinder.census.gov/home/en/datanotes/expsf1u.htm>.

Legend

Data Classes

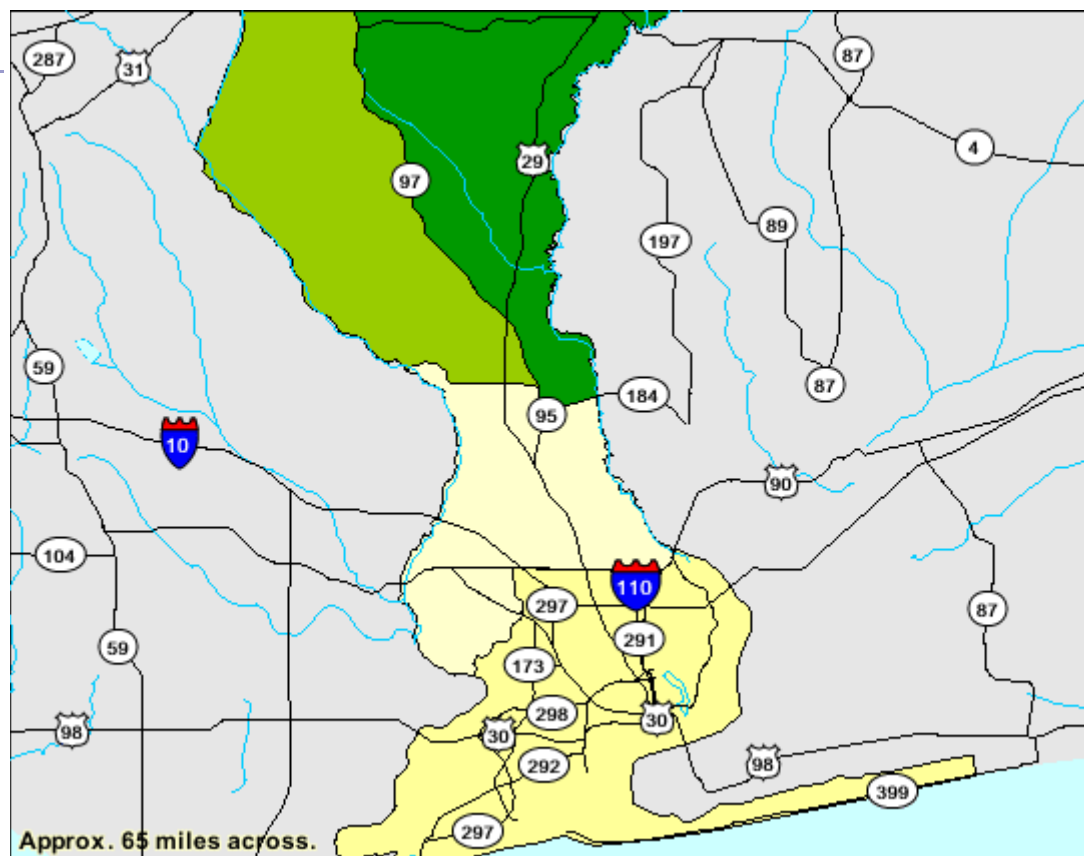
Males/100 Females

91 - 91
97 - 97
99 - 99
131 - 131

Features

- Major Road
- Street
- Stream/Waterbody
- Stream/Waterbody

Items in gray text are not visible at this zoom level



Source: U.S. Census Bureau, Census 2000 Summary File 1, Matrix P12.

Scale 1:660000 inches

THOMAS ANALYSIS: From the map above, we can see that in the southern region of the county, there are only 91 males per 100 females. This is inversely related to the northern portion of the county. The southern part of the county is more heavily populated, younger and has a higher incidence of single households. If birthrate is constant across the county, it might imply a high rate of migration of younger females from the northern rural part of the county to the more densely settled southern part of the county. Reasons might be many, but there might be more opportunity for employment and education in the southern part of the county for younger single females.