

U.S. Census Bureau
American FactFinder



THOMAS MAP 2: TM-P002. Persons per Square Mile: 2000 Created for Penn State Assignment
 Universe: **Total population**
 Data Set: **Census 2000 Summary File 1 (SF 1) 100-Percent Data**
Escambia County, Florida by County Subdivision

NOTE: For information on confidentiality protection, nonsampling error, definitions, and count corrections see <http://factfinder.census.gov/home/en/datanotes/expsf1u.htm>.

Legend

Data Classes

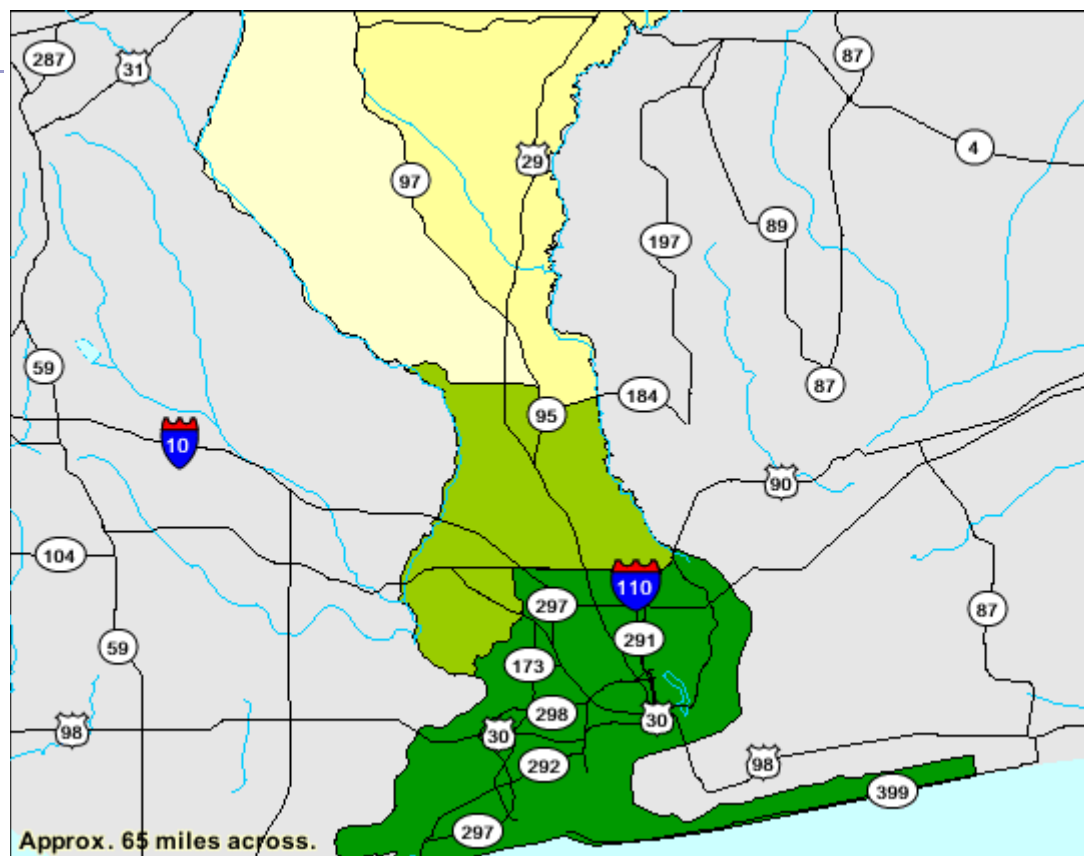
Persons/Sq Mile

- 24 - 24
- 52 - 52
- 348 - 348
- 1500 - 1500

Features

- Major Road
- Street
- Stream/Waterbody
- Stream/Waterbody

Items in gray text are not visible at this zoom level



Source: U.S. Census Bureau, Census 2000 Summary File 1, Matrix P1

Scale 1:660000 inches

Thomas Analysis:

This choropleth map displays the population density for Escambia County Florida. The unit of measure is persons/sqmile. It can be seen from this map that as of the year 2000, the population density is higher in the southern part of the county. Most of the population is located in the southern part of the county (see Map 1) and there are more people per square mile as well.