

U.S. Census Bureau
American FactFinder



THOMAS MAP 3 - TM-P021. Total Households: 2000; Created for Penn State Assignment
 Universe: **Households**
 Data Set: **Census 2000 Summary File 1 (SF 1) 100-Percent Data**
Escambia County, Florida by County Subdivision

NOTE: For information on confidentiality protection, nonsampling error, definitions, and count corrections see <http://factfinder.census.gov/home/en/datanotes/expsf1u.htm>.

Legend

Data Classes

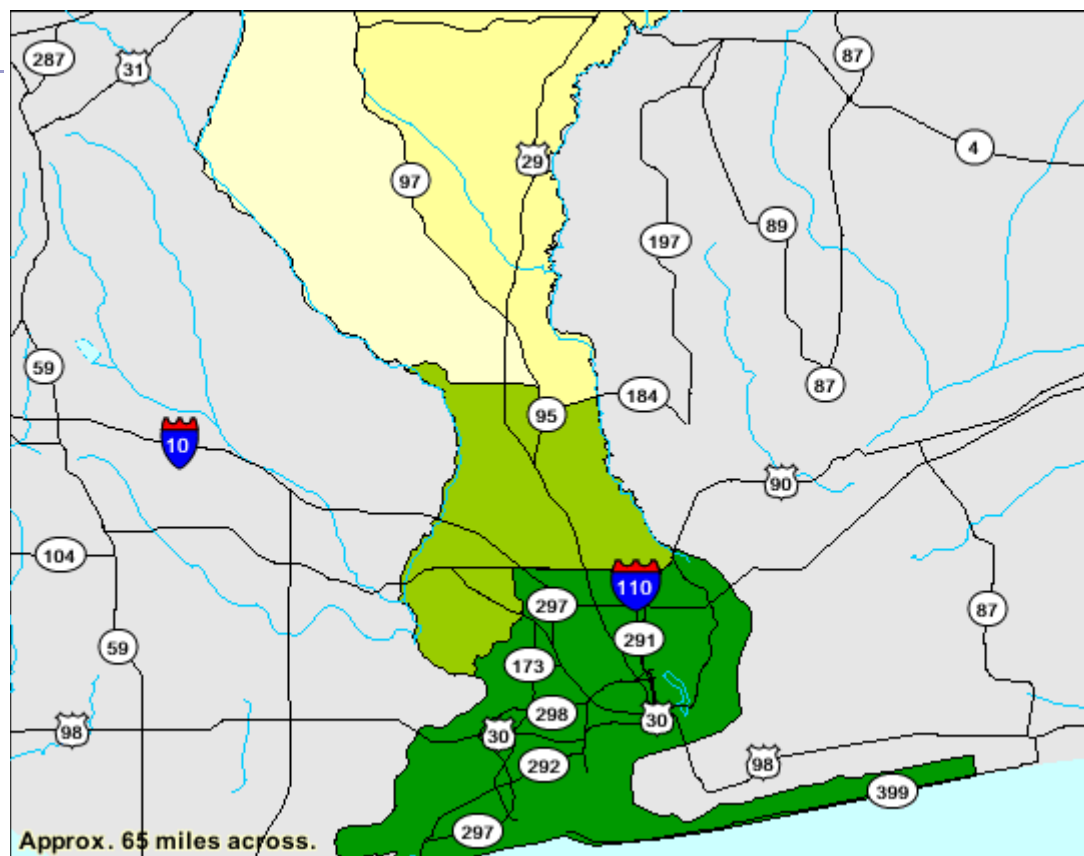
Total Households

- 1637 - 1637
- 3254 - 3254
- 16015 - 16015
- 90143 - 90143

Features

- Major Road
- Street
- Stream/Waterbody
- Stream/Waterbody

Items in gray text are not visible at this zoom level



Source: U.S. Census Bureau, Census 2000 Summary File 1, Matrix P15

Scale 1:660000 inches

Thomas Analysis :

The number of households is greater in the southern part of the county (area in green, value = 90143). From maps 1 and 2 we saw a greater number of persons and a greater population density. Map 3 is consistent with Maps 1 and 2.